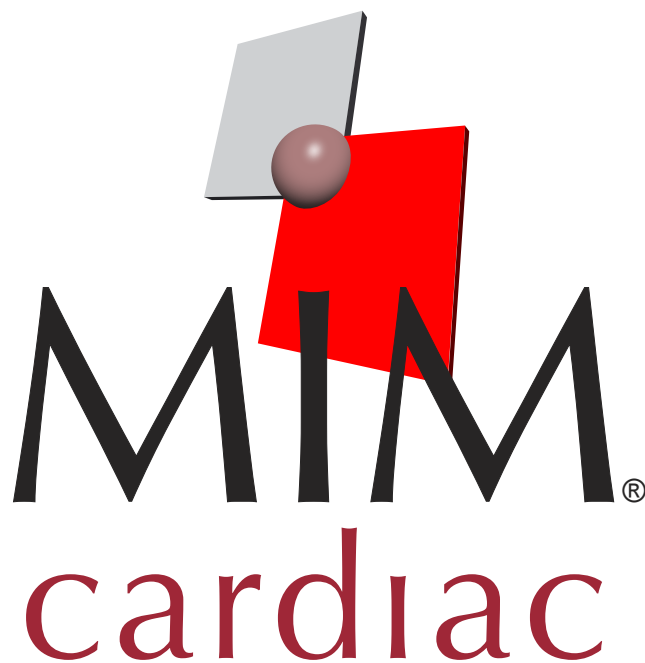
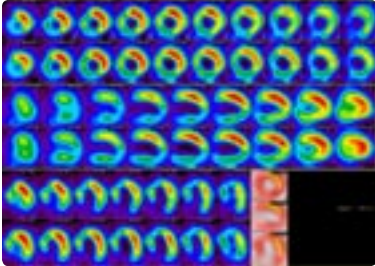


contouring · cardiac · fusion · neuro · connectivity

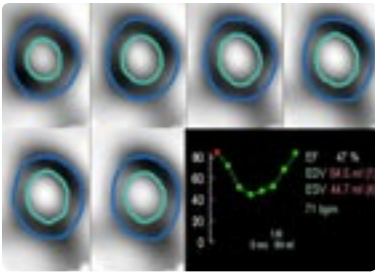


enhancing patient care



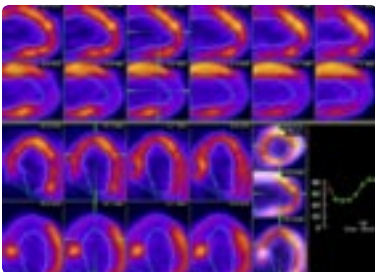
cardiac display

Cardiac image volumes in 3D or ECG gated 4D format from PET, SPECT, MR or CT can be rotated and displayed in ASNC format. Any two image volumes can be aligned and displayed in ASNC format using standard MIM manual and automatic image registration with true color fusion display. Multi-modality display automatically accounts for differences in voxel size between image volumes.



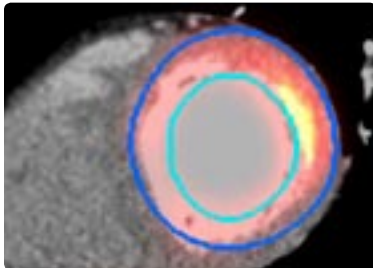
quantitative functional analysis

Automatic myocardial contour definition of ECG gated 4D image volumes from PET or SPECT permits generation of ventricular volume curves and ejection fraction calculation. MIM provides 2D/3D paintbrush contour editing of automatically generated myocardial contours.



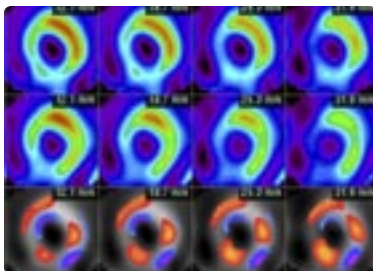
4D fusion

MIM provides ECG gated 4D registration and fusion display for cardiac image volumes from the same or different modalities including PET, SPECT, MR or CT. Individual time points or cine review are available.



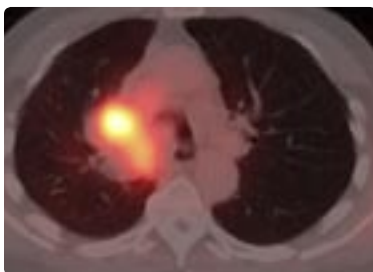
CTCA

MIM rotates CTCA image volumes to standard ASNC orientation. CTCA image volumes can be aligned to PET, SPECT or MR image volumes. True color fusion display relates perfusion/metabolism to the CT cardiac image volume. CTCA image volume with myocardium defined from aligned SPECT image volume is displayed.



subtraction

Aligned image volumes can be normalized to automatically or operator defined normal myocardial count levels and subtracted. The subtracted image volumes are also displayed in ASNC format. Both original and subtracted difference images can be localized with triangulation tools and are automatically linked as volumes. Layout, slice separation, and number of slices are user configurable for any image orientation.



comprehensive image review

MIM provides unparalleled functionality as a multi-modality image review workstation which includes display of fusion images acquired on both separate and combination scanners. A thorough review package is offered including cardiac, PET, 2D and image fusion. Increased practicality is afforded with robust DICOM connectivity between modalities, PACS, and radiation therapy workstations. All user controls are accessible with a mouse click. MIM provides excellent flexibility with both image manipulation and display variety.

contouring • cardiac • fusion • neuro • connectivity

intuitive and efficient interface

- multi-modality fusion & display (PT, NM, CT, MR, 2D)
- assisted alignment completed in ~10 seconds
- assisted alignment on user defined local anatomy
- intuitive manual alignment
- comprehensive PET review
- operator controls accessible with a mouse click
- multiple display options
- generate multiple slices of any view
- display volumes at any magnification
- synchronized display of aligned images
- original volume resolution is maintained
- on-screen help
- create subtraction/difference images

contouring

- automatic PET/SPECT 3D contouring tool
- contour editing with 2D/3D paintbrush in axial, sagittal and coronal views
- segment tumor volumes based on SUV levels
- quality true color image fusion facilitates contour definition
- highlight voxel contours on aligned CT/MR volumes for legacy RTP systems

cardiac

- ASNC orientation
- automatic calculation of cardiac volumes
- gated PET/SPECT LVEF measurements
- fusion of stress/rest images
- difference images expressed in percent of maximum myocardial intensity

enhanced marketing tools

- MIMvision DICOM viewer with fusion capabilities
- annotation
- report generation
- screen capture utilities

system specifications

- Pentium 4 3.2+ GHz
- 2 GB RAM
- 48x CD-RW drive or 16x DVD-RW
- 400 GB hard drive
- 64+ MB VGA/DVI graphics card
- 19" high res or 19"/20" flat panel monitor(s)
- 10/100/1000 ethernet card
- MS Windows® 2000/XP Professional

import formats

- 3D DICOM PT, NM, CT, MR
- 2D DICOM NM, US, CR, DR, CT scout, Secondary Capture
- ECAT PET and Siemens ICON
- JPEG, TIFF, BMP
- Interfile

output formats

- DICOM aligned PT, NM, CT, MR
- DICOM RT Structure Sets for ROI contours
- DICOM Secondary Capture
- MIP as DICOM, AVI, MPEG
- JPG, BMP, TIFF
- DICOM Print
- Windows® Print

networking

- DICOM send/receive & query/retrieve
- send volumes and secondary captures to PACS
- FTP send/receive

MIMvista Corp.

25200 Chagrin Blvd, Suite 200
Cleveland, OH 44122
866-421-2536

www.mimvista.com
info@mimvista.com



MediMark® Europe Sarl.
11, rue Emile Zola. BP 2332
F-38033 Grenoble Cedex 2. France
Tel: +33 (0)4 76 86 43 22
Fax: +33 (0) 4 76 17 19 82
e-mail: info@medimark-europe.com